

<To register your PC>

In order for you to complete the application sheet for the wireless LAN, you need to fill out the Mac address of your PC.

The Mac address consists of a 12-digit alphabetical characters and decimal numbers.

Please find out your Mac address referring to the below.

<How to find out Mac address>

If you use a wireless LAN card, you can find the Mac address on the back of the LAN card.

If your PC has Ethernet adapter built-in, you can find the 12-digit Mac address as follows:

< Linux >

As the root user (or user with appropriate permissions)

Type **"ifconfig -a"**

From the displayed information, find eth0 (this is the default first Ethernet adapter)

Locate the number next to the **HWaddr.** (This is your MAC address)

< iPhone& iPod& iPad >

From the iPhone main Screen, select Settings.→ General → About (you will find Wi-Fi)

Wi-Fi is your MAC address

<NOKIA MAC Address>

Standby screen→ Type #62209526#→ **WLAN MAC Address**

How to Find the Mac Address of your computer <Windows XP>

Please make sure your wireless LAN card is ON.. If it is OFF, please set it ON and reboot your PC.

1. Click on the Start Menu.
2. Click on 'Run...'
3. Type 'cmd' quotes and press Enter.
4. At the command prompt, type 'ipconfig [space] /all' without quotes. (space between g and /)
5. Alternatively, if using Windows XP, you can use the command 'getmac'.
6. Your MAC address is listed under 'Physical Address' as a series of 6 groups of two digits, letters and numbers, separated by dashes, such as in the image below.

```
Windows IP Configuration

Host Name . . . . . : latitude
Primary Dns Suffix . . . . . :
Node Type . . . . . : Hybrid
IP Routing Enabled. . . . . : No
WINS Proxy Enabled. . . . . : No
DNS Suffix Search List. . . . . : sod.ncsu.edu
                                sod.ncsu.edu

Ethernet adapter Wireless Network Connection:

    Connection-specific DNS Suffix  . : sod.ncsu.edu
    Description . . . . . : Dell Wireless 1350 WLAN
    Physical address . . . . . : 00-e0-00-61-88-77
    Dhcp Enabled. . . . . : Yes
    Autoconfiguration Enabled . . . . . : Yes
    IP Address. . . . . : 152.1.94.95
    Subnet Mask . . . . . : 255.255.255.192
    Default Gateway . . . . . : 152.1.94.65
    DHCP Server . . . . . : 152.1.1.103
    DNS Servers . . . . . : 152.1.2.22
                                152.1.9.5
    Primary WINS Server . . . . . : 152.1.2.42
    Lease Obtained. . . . . : Tuesday, July 12, 2005 11:08:34 AM
    Lease Expires . . . . . : Monday, January 18, 2038 11:14:07 PM

Ethernet adapter Local Area Connection:

    Connection-specific DNS Suffix  . : sod.ncsu.edu
    Description . . . . . : Broadcom NetXtreme 57xx Gigabit Cont
    Physical address . . . . . : 00-e0-00-7e-e2-66
    Dhcp Enabled. . . . . : Yes
    Autoconfiguration Enabled . . . . . : Yes
    IP Address. . . . . : 152.1.94.95
    Subnet Mask . . . . . : 255.255.255.192
    Default Gateway . . . . . : 152.1.94.65
    DHCP Server . . . . . : 152.1.1.103
    DNS Servers . . . . . : 152.1.2.22
                                152.1.9.5
    Primary WINS Server . . . . . : 152.1.2.42
    Lease Obtained. . . . . : Tuesday, July 12, 2005 11:08:22 AM
    Lease Expires . . . . . : Monday, January 18, 2038 11:14:07 PM
```

Wireless
Mac Address

Wired
Mac Address
(For the KEK apartment only)

Wireless LAN MAC Address

"Ethernet adapter Wireless Network Connection" "Physical Address"

Wired LAN MAC Address (For the KEK Apartment)

"Ethernet adapter Local Area Connection" "Physical Address"

How to Find the MAC address of your computer < Windows Vista/Windows 7 >

Please make sure your wireless LAN card is ON. If it is OFF, please set it ON and reboot your PC

1. Click on the Start Menu.
2. Click on 'Run...'
3. Type `cmd` quotes and press Enter.
4. At the command prompt, type `ipconfig[space]/all` without quotes.
(space between g and /)

```
Administrator: C:\Windows\system32\cmd.exe
Microsoft Windows [Version 6.0.6001]
Copyright (c) 2006 Microsoft Corporation. All rights reserved.

C:\Users\>ipconfig /all

Windows IP Configuration

Host Name . . . . . : -PC
Primary Dns Suffix . . . . . :
Mode Type . . . . . : Hybrid
IP Routing Enabled. . . . . : No
WINS Proxy Enabled. . . . . : No
DNS Suffix Search List. . . . . : stevens-tech.edu

Ethernet adapter Bluetooth Network Connection:

Media State . . . . . : Media disconnected
Connection-specific DNS Suffix . . . . . :
Description . . . . . : Bluetooth Device (Personal Area Network)
Physical Address. . . . . : 00-1A-DA-6B-80-65
DHCP Enabled. . . . . : Yes
Autoconfiguration Enabled . . . . . : Yes

Wireless LAN adapter Wireless Network Connection:
Connection-specific DNS Suffix . . . . . : stevens-tech.edu
Description . . . . . : Intel(R) Wireless
Physical address . . . . . : 00-e0-00-61-88-77
Autoconfiguration Enabled . . . . . : Yes
Link-local IPv6 Address . . . . . : fe80::dc79:2a19:b9aa:0e94%1 (Preferred)
IPv4 Address. . . . . : 155.246.166.1 (Preferred)
Subnet Mask . . . . . : 255.255.255.0
Lease Obtained. . . . . : Tuesday, June 03, 2008 12:49:16 PM
Lease Expires . . . . . : Tuesday, June 03, 2008 2:49:16 PM
Default Gateway . . . . . : 155.246.166.1
DHCP Server . . . . . : 155.246.1.21
DNS Servers . . . . . : 155.246.1.21
                        155.246.1.20
Primary WINS Server . . . . . : 155.246.1.109
NetBIOS over Tcpip. . . . . : Enabled

Ethernet adapter Local Area Connection:
Media State . . . . . : Media disconnected
Connection-specific DNS Suffix . . . . . : stevens-tech.edu
Description . . . . . : Intel(R) 82566MM Gigabit Network Connection
Physical address . . . . . : 00-e0-00-7e-e2-66
DHCP Enabled. . . . . : Yes
Autoconfiguration Enabled . . . . . : Yes
```

In case, displayed message is too long and can not find a Mac address means space ipconfig /all (pipe or using _key+Shift) more enter (Displays each line. Use Q key to finish in the middle of the message)

If you see two Wireless Network Connections like 1 and 2, please fill in both addresses.

Wireless LAN MAC Address

“wireless LAN adapter Wireless Network Connection:” “Physical Address”

Wired LAN MAC Address (For the KEK Apartment)

How to Find the MAC address of your computer <Mac OS>

Please make sure your wireless LAN card is ON. If it is OFF, please set it ON and reboot your PC

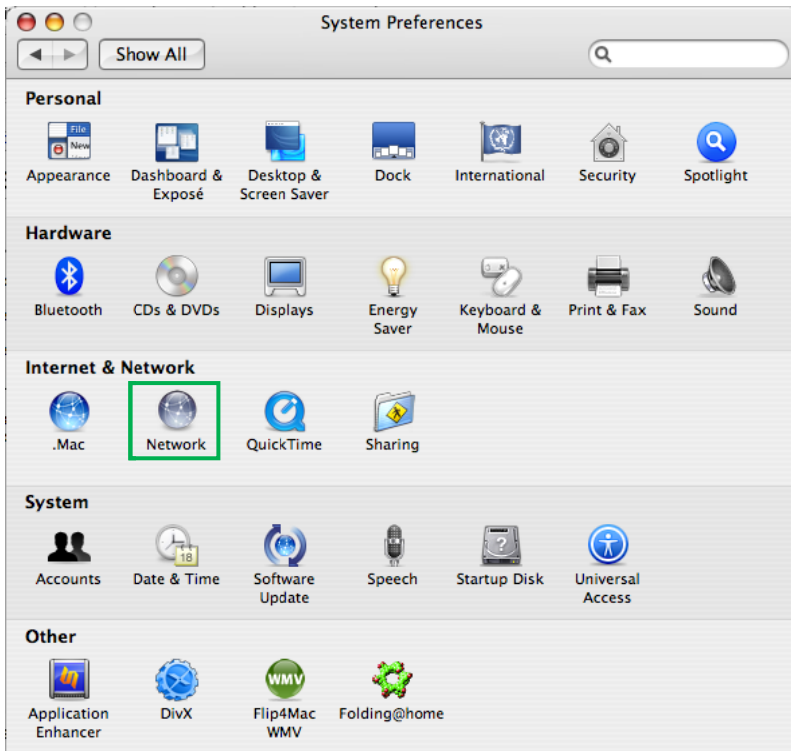
1. Open System Preferences

Click on the Blue Apple Logo (🍏) in the upper right hand corner of the screen

System Preferences

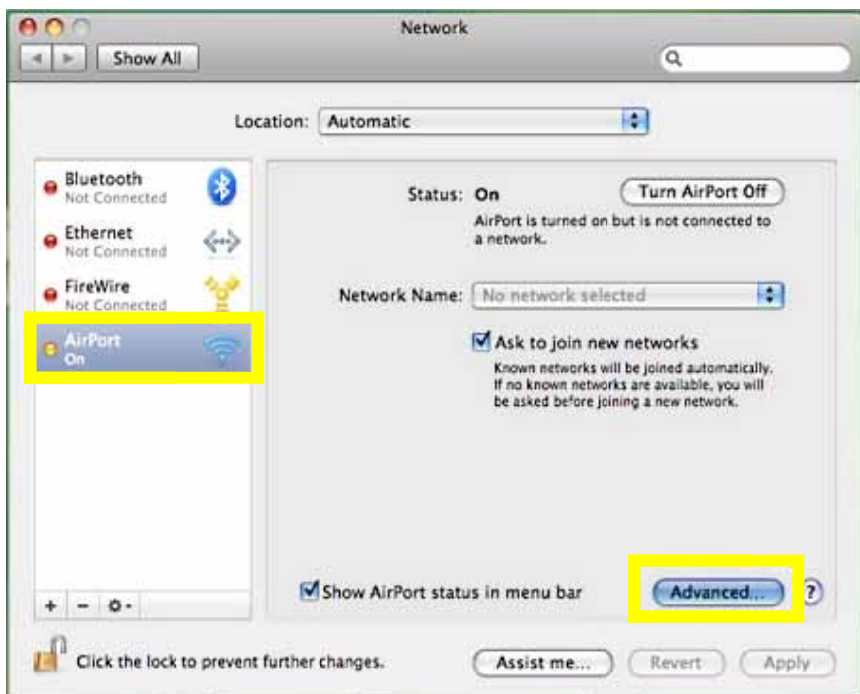
2. Select Network

While in **System Preferences** select the **Network** icon.



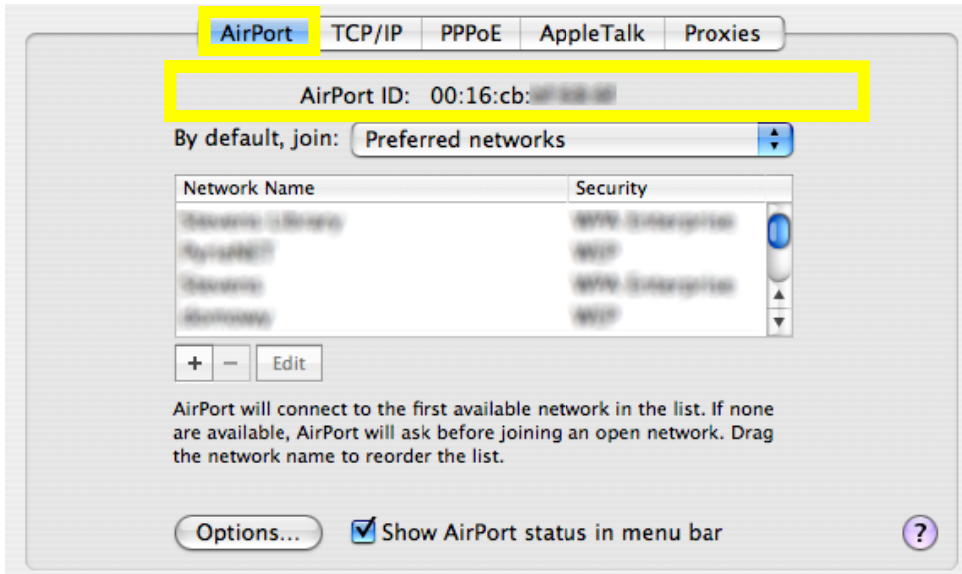
3. Select Device

In the window that appears, highlight the device you wish to find the physical address for and click **1. AirPort** and click **2. Advanced**.



Wireless LAN MAC Address

Your Wireless MAC Address is labeled as the Airport ID.



Wired LAN MAC Address (Apartment)

- 1 To locate your Wired MAC address, click the Ethernet tab
- 2 Once there, your MAC Address is labeled as the Ethernet ID.

